

UNIQUE WILDFLOWER AS DISPLAYED INCLUSIONS

- Acrylic render to front elevation, external wall to side of Bedroom 4 and Alfresco walls and pier
- External tile cladding from Builders Elegance range to sections of front elevation
- Aluminium stacker style sliding door to Alfresco
- Solid Duracote access door to rear of Garage
- Gainsborough Trilock door hardware to rear Garage door
- 2340mm high internal doors and frames (excludes Front Entry, Garage/Entry and Rear Garage doors)
- Clear glazed single panel glass door to Audio Visual
- Translucent glazed single panel glass door between Scullery/Pantry and Laundry
- Picture recesses to Front Entry Passage
- One Electrolux 900mm multi-function electric oven to Kitchen
- Electrolux microwave with trim kit
- Maximum two stone colours allowed for to benchtops
- Builders upgrade range stone benchtops allowed for to Ensuite, Bathroom, Powder and Laundry benchtops
- One 20mm thick stone waterfall end to Kitchen benchtop from Builders standard range
- 90mm mitred edge stone attached table to Kitchen with two 90mm mitred edge stone waterfall ends from Builders upgrade range
- 20mm thick stone benchtop from Builders standard range with cupboards, three drawers and overhead cupboards to Scullery/Pantry
- Mirrored splashback to Kitchen and Scullery/Pantry from Builders standard range
- Contrasting horizontal grain laminate to Kitchen upstand only
- Hobless showers to Ensuite and Bathroom
- European inspired 1700mm freestanding bath with tiled plinth to Ensuite
- 1000mm high wall tiling to Ensuite and Bathroom (shower areas to remain at 2000mm high)
- 1000mm high wall tiling to Ensuite WC and Powder
- Two sets of 300mm wide drawers to Ensuite vanity
- 1130mm high mirror to Bathroom
- 20mm thick stone benchtop from Builders standard range with cupboards under with European inspired above counter china basin, European inspired mixer, frameless full vanity width mirror and European inspired towel ring to Powder
- Overhead cupboards to Laundry
- Mitred tiled edges throughout
- Linen to Front Entry Passage with four shelves
- 20mm thick stone benchtop from Builders standard range to Front Entry Passage Drop Zone

WHICH SPECIFICATION? DISPLAY ELEGANCE ESSENTIALS

ELEGANCE/ESSENTIALS SPECIFICATIONS

	ELEGANCE	ESSENTIALS
Standard inclusions		
Home Owners Indemnity insurance	•	•
H.I.A. fixed Building Contract	•	•
6 Star compliant home	•	•
4 month maintenance period	•	•
Re-Peg to site (to new subdivisions)	•	•
Contour survey completed on your block	•	•
Building Permit and Water Corporation application fees included	•	•
Termite treatment and certificate	•	•
R4.0 ceiling insulation to home including Garage	•	•
Double clay brick construction	•	•
2 course Blueprint Homes range external face bricks	•	•
Rolled brick joints in cream mortar	•	•
Your choice of full COLORBOND® metal roof range	•	•
COLORBOND® fascia, downpipes and gutters	•	•
25° roof pitch as standard	•	•
H2 treated roof timbers	•	•
Quality Dowell powder-coated aluminium sliding glass doors	•	•
Quality Dowell powder-coated aluminium breeze lock windows	•	•
Flyscreens to all aluminium opening windows and sliding doors	•	•
Metal corner plaster beads to all internal trafficable corners (excludes sliding door, window and front door reveals)	•	•
Quality Gainsborough lever door handles to internal doors	•	•
European inspired mixers throughout	•	•
A.B.S. edges to laminated cupboard doors	•	•
Shelf and rail to minor Bedroom robes	•	•
Walk-in or Built-in Pantry with 4 white lined shelves (as per plan)	•	•
Walk-in or Built-in Linen with 4 white lined shelves (as per plan)	•	•
Painting specification includes: ceilings and cornice, doors and door frames, eaves, woodwork and meterbox	•	•
Dishwasher provision with cold tap and single power point	•	•
Future connect pack including TV, phone and internet point	•	•
Double power points throughout excluding Garage and appliance locations	•	•
3 external, 1 Garage ceiling and ample internal light points	•	•
Hard wired smoke detectors	•	•
2 safety switches	•	•
2 external garden taps	•	•
Feature front elevation (as displayed)	•	
Double Garage with 28c high 10mm plasterboard ceiling and concrete hardstand	•	
Builder's Elegance range custom auto sectional door to Garage as displayed with 3 controllers	•	
Up to 6m long full width paved Driveway, Verandah/Portico/Porch, Alfresco and 1m wide path (from Blueprint Homes 60mm Elegance range) (with exception of rear Garage designs which include a 2m long Driveway as standard)	•	
Painted sand finish rendered to front elevation	•	
Double Garage with 25c high Hardiflex ceiling with MDF scotia and concrete hardstand	•	
Builder's Essentials range Colorbond auto sectional door to Garage with flush fit pelmet and track system and 3 controllers	•	
Up to 6m long full width paved Driveway, Verandah/Porch, Alfresco and 1m wide path (from Blueprint Homes 60mm Essentials range) (with exception of rear Garage designs which include a 2m long Driveway as standard)	•	
31c high ceilings as displayed	•	
3c recessed 10mm plasterboard ceiling to Alfresco (as displayed)	•	
Feature glass hinged 1200 entry door to front entry	•	
Gainsborough Omni pull handle entry set to front entry door	•	
Gainsborough Trilock door hardware to Garage entry door	•	
Feature glass front entry door to front entry	•	
Quality Gainsborough deadlock and lever entrance set to Front Entry and Garage entry doors	•	
Solid Duracote access door to Garage entry	•	•

! This is an ex-display home and as such specification items may have changed. Please contact your Blueprint Homes representative for current information.

	ELEGANCE	ESSENTIALS
Quality Whitekote or Mirrored sliders to robes		•
Built-in shelving system to Master Suite walk-in robe (as displayed)		•
Door and frame to robes in minor Bedrooms		•
Shelf and rail to Master Suite walk-in-robe		•
Shelf and rail to minor Bedroom robes	•	•
Builders Elegance range cornice throughout internally and to Garage, Portico/Porch and Alfresco (as displayed)	•	
Clipsal Slimline light switches and power points from Builder's Elegance Range	•	
5 star gas storage 160ltr hot water system	•	
5 star gas storage 130ltr hot water system		•
Choice of quality handles from Builder's Elegance range to all cupboards	•	
Choice of quality handles from Builder's Essentials range to all cupboards		•
Soft closing cabinet doors and drawers as standard	•	•
Kitchen		
20mm stone benchtops to Kitchen	•	
Electrolux 900mm black ceramic glass gas hot plate	•	
Electrolux 600mm stainless steel multi-function electric oven/s or Electrolux 900mm stainless steel multi-function electric oven (as displayed)	•	
Elegance range 900mm canopy style rangehood (flumed) or Elegance range 750mm concealed rangehood (flumed) (as displayed)	•	
European inspired double bowl undermount stainless steel sink with mixer	•	
Pot drawers to Kitchen (as displayed)	•	
Overhead cupboards (as displayed)	•	
Square postformed laminated benchtops to Kitchen		•
Westinghouse 900mm stainless steel gas hot plate with wok burner	•	
Westinghouse 900mm stainless steel multifunction electric oven or Westinghouse 600mm multifunction electric oven	•	
900mm canopy style rangehood (flumed)	•	
1000mm wide splashback tiling between hotplate and rangehood	•	
European inspired 1¼ bowl single drainer stainless steel sink with mixer	•	
Laundry & Bathrooms		
European inspired dual flush china toilet suite with 4 star rating and soft close seat	•	•
Automatic washing machine taps	•	•
2m high tiling to Bathroom and Ensuite shower recess	•	•
Floor tiling to Bathroom, Ensuite, WC's and Laundry	•	•
European inspired chrome double towel rails and toilet roll holders	•	•
European inspired gooseneck with round or square rainhead shower to Bathroom	•	
European inspired gooseneck with round or square rainhead shower or ceiling mounted round or square rainhead to Ensuite	•	
20mm stone benchtops to Bathroom, Ensuite and Laundry	•	
European inspired 38ltr china trough and cabinetry to Laundry	•	
Clear glazed semi-frameless shower pivot door to Bathroom and Ensuite	•	
European inspired above counter china basins to Bathroom and Ensuite	•	
Frameless full vanity width mirror to Bathroom and Ensuite	•	
Flumed exhaust fan to Ensuite, Bathroom and WC's	•	
Tiled insert floor wastes (as displayed)	•	
1525mm long bath (as displayed)	•	
European inspired gooseneck with round or square rainhead shower to Ensuite and Bathroom	•	
Square postformed laminated benchtops to Bathroom, Ensuite and Laundry	•	
European inspired 45ltr stainless steel trough and 1m cabinetry to Laundry	•	
Clear glazed framed pivot shower screen door to Bathroom and Ensuite	•	
European inspired inset china basins to Bathroom and Ensuite	•	
Framed full vanity width mirror to Bathroom and Ensuite	•	
Flumed exhaust fan to WC areas	•	
Chrome plated floor wastes	•	
1525mm long bath (as per plan)	•	

THE WILDFLOWER

blueprint
HOMES



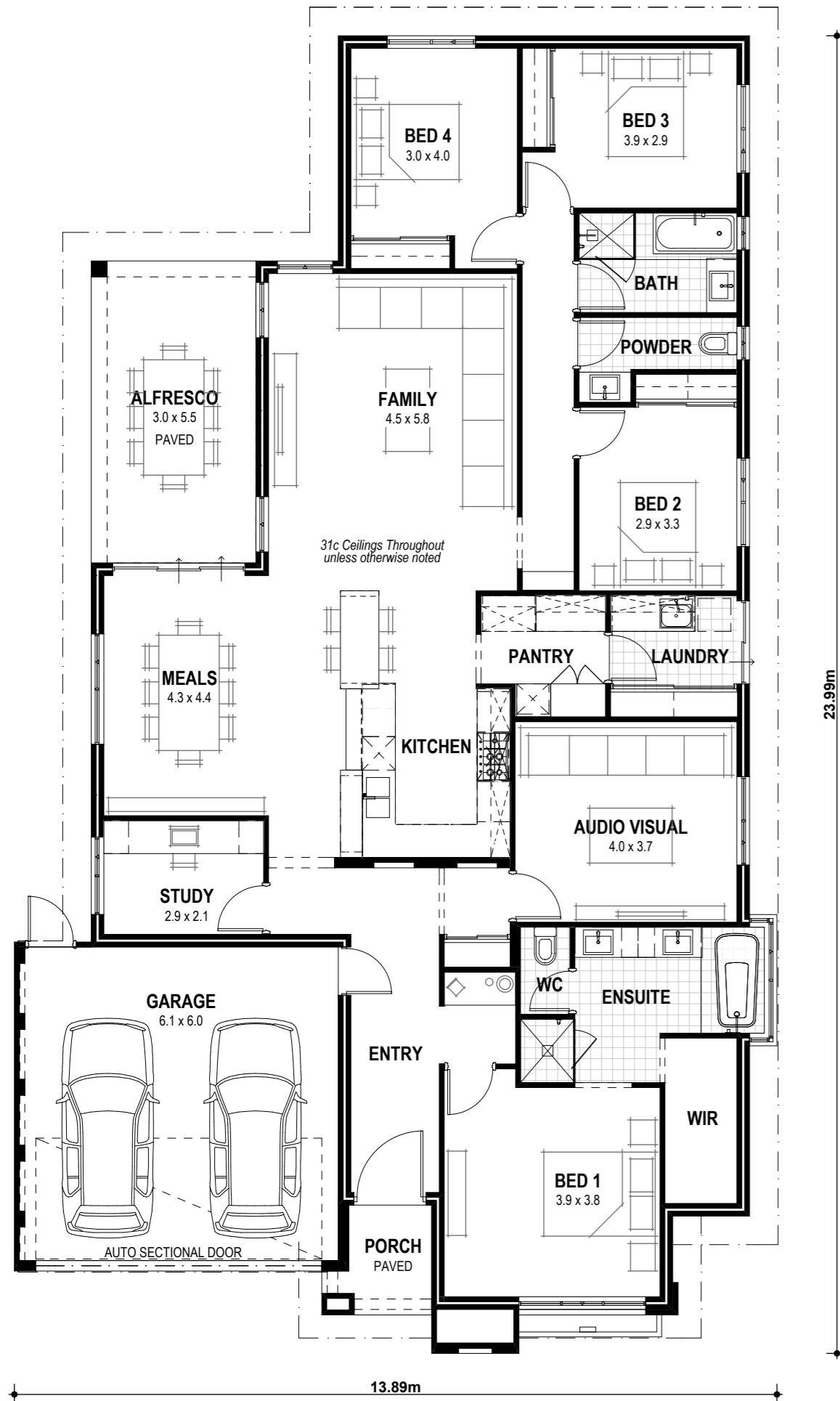
14 Wildflower View, Piara Waters (Holland Park Private Estate)

9440 1800
blueprinthomes.com.au

THE WILDFLOWER ELEGANCE

VITAL STATS Living area 225m² (including Alfresco) Total area 264m² (excluding eaves) Scale 1:100

4 2 2



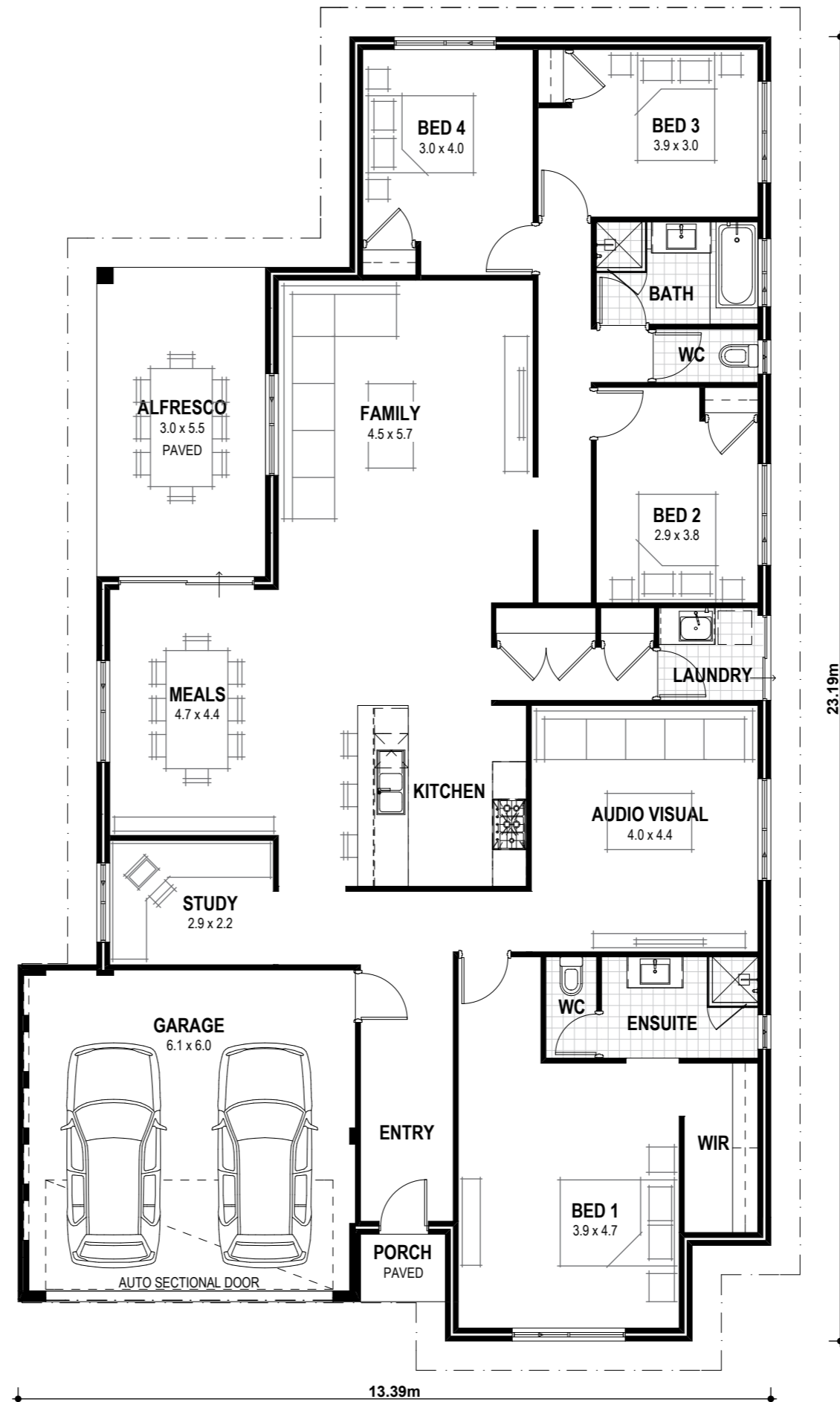
SIGNATURE

NAME

THE WILDFLOWER ESSENTIALS

VITAL STATS Living area 224m² (including Alfresco) Total area 261m² (excluding eaves) Scale 1:100

4 2 2



SIGNATURE

NAME



Blueprint Homes WA Pty Ltd
257 Balcatta Road, Balcatta WA 6021
PO Box 772, Balcatta WA 6914
P 6241 4888 | W blueprinthomes.com.au

Disclaimer: This information is accurate at time of printing. All details are to be confirmed during your consultation with your Blueprint representative and your final plans and addenda will represent what you have purchased.