

! This is an ex-display home and as such specification items may have changed. Please contact your Blueprint Homes representative for current information.

ELEGANCE/ESSENTIALS SPECIFICATIONS

	ELEGANCE	ESSENTIALS
Standard inclusions		
Home Owners Indemnity insurance	•	•
HIA fixed Building Contract	•	•
4 month maintenance period	•	•
Termite treatment and certificate	•	•
R4.0 ceiling insulation to home including Garage	•	•
6 Star compliant home	•	•
Repeg to site (to new subdivisions)	•	•
Contour survey completed on your block	•	•
Building Licence and Water Corporation fees included	•	•
Double clay brick construction	•	•
2 course external face bricks as standard	•	•
25° roof pitch as standard	•	•
Feature front elevation as displayed	•	
Render to front elevation		•
Double Garage with 28c high gyprock lined ceiling and concrete hardstand	•	
Custom Garage auto sectional door from Builder's standard range as displayed with 3 controllers	•	
Double Garage with 25c high Hardiflex ceiling with MDF scotia, concrete hardstand and auto sectional door with 3 controllers		•
Up to 6m long full width Brikmakers paved driveway, Verandah/Portico/Porch, Alfresco and 1m wide path (from Builder's 60mm Elegance range)	•	
Up to 6m long full width 60mm thick paved driveway, Verandah/ Porch/Alfresco and 1m wide path (with exception of rear garage designs which include 2m as standard)		•
Rolled brick joints in cream mortar	•	•
Your choice of full COLORBOND® metal roof range	•	•
COLORBOND® fascia, downpipes and gutters	•	•
31c ceilings as displayed	•	
3c recessed gyprock ceiling to Alfresco (where applicable)	•	
Quality Dowell powdercoated aluminium sliding glass doors and breeze lock windows	•	•
Flyscreens to all aluminium opening windows and sliding doors	•	•
Metal corner plaster beads to all internal trafficable corners (excludes sliding door, window reveals and front door)	•	•
Solid Duracote access door to Garage entry and rear of Garage as displayed	•	
Feature glass hinged 1200 entry door with quality Gainsborough Omni pull handle to front entry door	•	
Feature glass front entry door with double deadlock		•
Quality Gainsborough lever door handles to internal doors	•	•
Gainsborough Trilock door hardware to Garage entry	•	
Quality Gainsborough deadlock and lever entrance set (to Garage/Entry)		•
Choice of quality handles from Builder's Elegance Range to all cupboards	•	
Choice of quality handles to all cupboards	•	•
European inspired mixers throughout	•	•
Soft closing cabinet doors as standard	•	
Soft closing cabinet drawers as standard	•	•
Quality Whitekote sliders as displayed	•	
Built-in shelving system to Master Suite walk-in robe as displayed	•	
Door and frame to robes in minor Bedrooms		•
Shelf and rail to built-in robes as displayed	•	•
ABS edges to laminated cupboard doors	•	•
Gyprock Trio™ cornice throughout internally and to Garage, Porch and Alfresco (if applicable)	•	
H2 treated roof timbers	•	•
Painting specification includes: ceilings and cornice, doors and door frames, eaves, woodwork and meterbox	•	•
Future connect pack including TV, phone and internet point	•	•

	ELEGANCE	ESSENTIALS
Double power points throughout excluding Garage and appliance locations	•	•
Clipsal Slimline light switches and GPO's from Builder's Elegance Range	•	
3 external, 1 Garage ceiling and ample internal light points	•	•
Hard wired smoke detectors	•	•
2 safety switches	•	•
5 star gas storage 160ltr hot water system	•	•
5 star gas storage 130ltr hot water system		•
2 external garden taps	•	•
Kitchen		
Electrolux E:Line 900mm black ceramic glass gas hot plate	•	
Westinghouse 900mm stainless steel gas hot plate with wok burner		•
Electrolux E:Line 600mm stainless steel multi-function electric oven/s as displayed	•	
Westinghouse 900mm stainless steel multifunction electric oven or Westinghouse 600mm multifunction oven		•
Elegance 900mm rangehood (flumed) as displayed	•	
900mm stainless steel canopy rangehood (flumed) and 1000mm splashback tiling above hotplate		•
Electrolux E:Line stainless steel microwave with trim kit as displayed	•	
20mm stone benchtops to Kitchen	•	
Square postformed laminated benchtops to Kitchen		•
Waterfall edge to end of Kitchen bench as displayed	•	
Contrasting kickboard to Kitchen	•	
Dishwasher provision with cold tap and GPO	•	•
Walk-in or Built-in Pantry with 4 white lined shelves as displayed	•	•
Overhead cupboards as displayed	•	
European inspired double bowl undermount stainless steel sink with mixer	•	
European inspired 1½ bowl single drainer stainless steel sink with mixer		•
Pot drawers to Kitchen as displayed	•	
Laundry & Bathrooms		
20mm stone benchtops to Ensuite, Bathroom and Laundry	•	
Square postformed laminated benchtops to Bathroom, Ensuite and Laundry		•
European inspired 38ltr china trough and cabinet to Laundry	•	
European inspired 45ltr stainless steel trough and 1m cabinetwork to Laundry		•
Automatic washing machine taps	•	•
Walk-in or Built-in Linen with 4 white lined shelves as displayed	•	•
Flumed exhaust fan to Ensuite, Bathroom and WC	•	•
Clear glazed semi-frameless shower pivot door to Bathroom and Ensuite	•	
Clear glazed framed pivot shower screen door to Bathroom and Ensuite		•
European inspired above counter china basins to Bathroom and Ensuite	•	
European inspired inset china basins to Bathroom and Ensuite		•
Frameless full vanity width mirror to Bathroom and Ensuite	•	
Full vanity width framed mirror to Bathroom and Ensuite		•
European inspired dual flush china toilet suite with 4 star rating and soft close seat	•	•
1525mm bath to Bathroom		•
European inspired Goose Neck with round or square rainhead or ceiling mounted round or square rainhead or shower rail to Ensuite	•	
European inspired Goose Neck showerhead to Bathroom	•	
European inspired Goose Neck with round or square rainhead to Ensuite and Bathroom		•
2m high tiling to Bathroom and Ensuite shower recess	•	•
Floor tiling to Bathroom, Ensuite, WC's and Laundry	•	•
Chrome plate floor wastes	•	•
European inspired chrome double towel rails and toilet roll holders	•	•
300mm wide drawers to ensuite vanity as displayed	•	

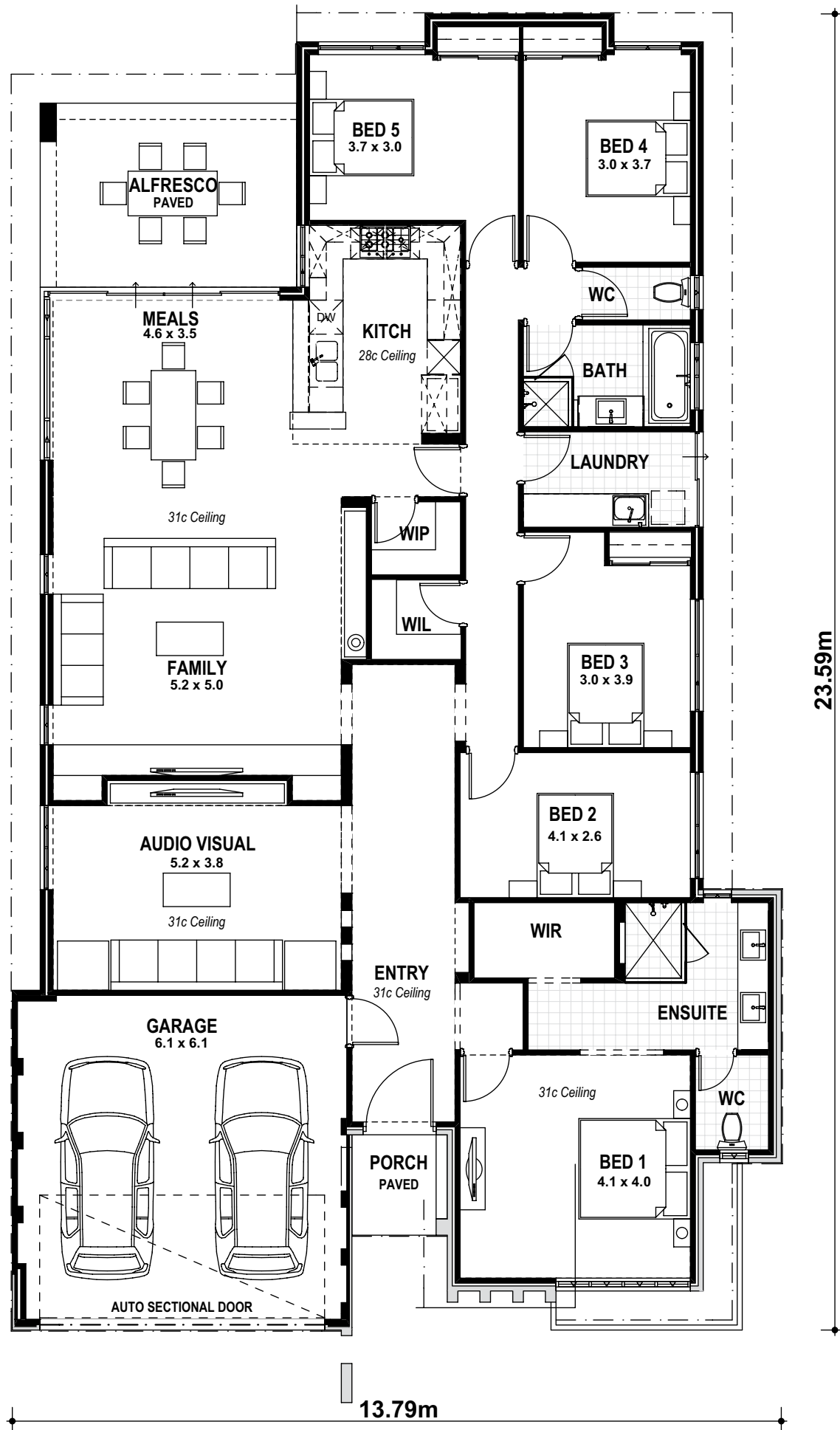
THE NORFOLK



THE NORFOLK ELEGANCE

5 2 2

VITAL STATS Living area 235m² (including Alfresco) | Total area 275m² (excluding eaves) | Scale 1:100



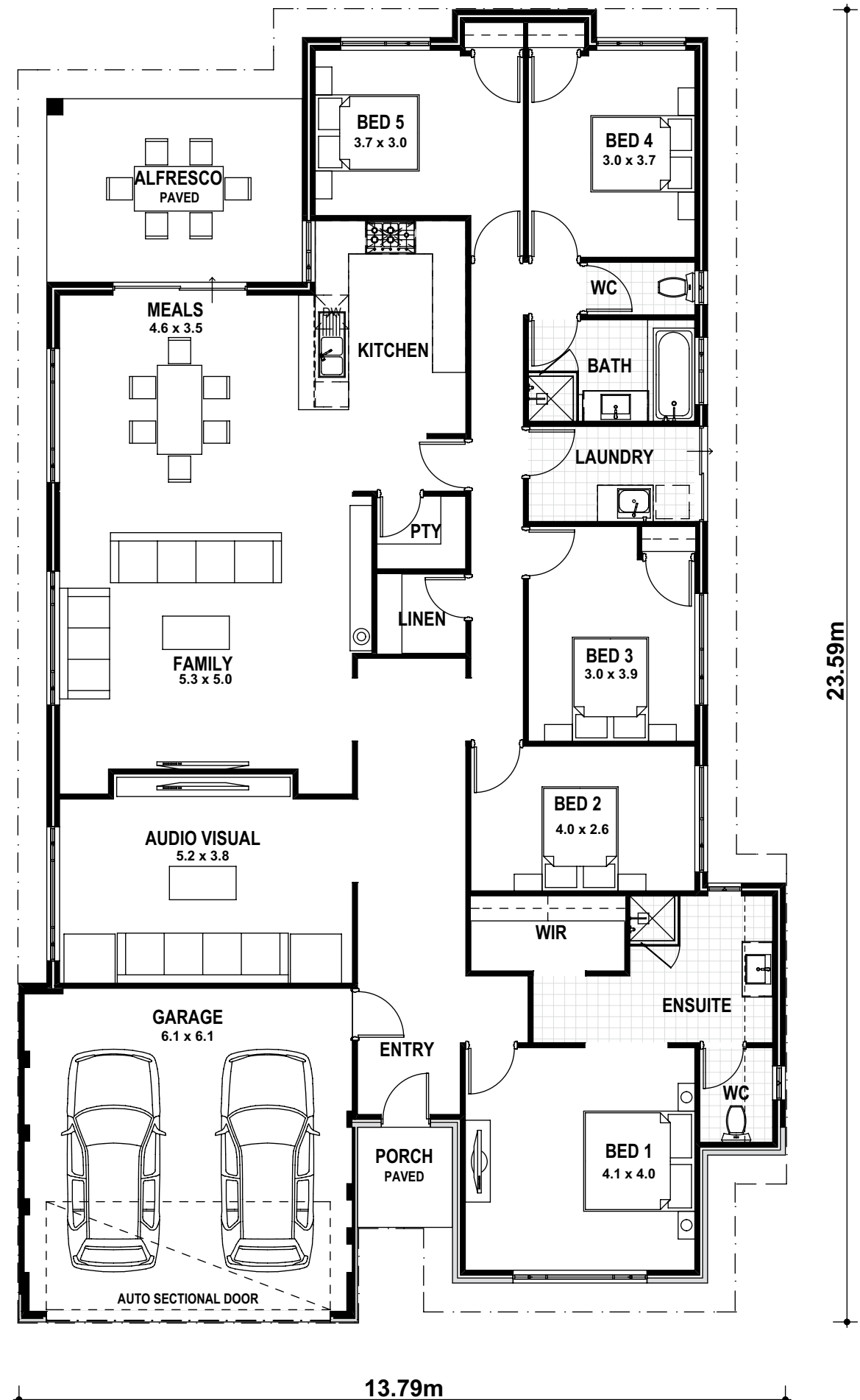
SIGNATURE

NAME

THE NORFOLK ESSENTIALS

5 2 2

VITAL STATS Living area 235m² (including Alfresco) | Total area 275m² (excluding eaves) | Scale 1:100



SIGNATURE

NAME