

NAME \_\_\_\_\_

SIGNATURE \_\_\_\_\_ DATE / / \_\_\_\_\_

**Standard inclusions**

- Home Owners Indemnity insurance
- H.I.A. fixed Building Contract
- 6 Star compliant home
- 4 month maintenance period
- Re-Peg to site (to new subdivisions)
- Contour survey completed on your block
- Building Permit and Water Corporation application fees included
- Termite treatment and certificate
- R4.0 ceiling insulation to home including Garage
- Double clay brick construction
- Painted sand finish render to Front Elevation (where applicable, as per plan)
- 2 course Blueprint Homes range external face bricks to sides and rear of home (where applicable, as per plan)
- Rolled brick joints in cream mortar
- Your choice of full COLORBOND® metal roof range
- COLORBOND® fascia, downpipes and gutters
- 25° roof pitch as standard
- H2 treated roof timbers
- Quality Dowell powder-coated aluminium sliding glass doors
- Quality Dowell powder-coated aluminium breeze lock windows
- Flyscreens to all aluminium opening windows and sliding doors
- Metal corner plaster beads to all internal trafficable corners (excludes sliding door, window and front door reveals)
- European inspired mixers throughout
- Shelf and rail to all Bedroom robes (where applicable, as per plan)
- Painting specification includes: ceilings and cornice, doors and door frames, eaves, woodwork and meterbox
- Future connect pack including TV, phone and internet point
- Double power points throughout excluding Garage and appliance locations
- 3 external, 1 Garage ceiling and ample internal light points
- Hard wired smoke detectors
- 2 safety switches
- 2 external garden taps
- 5 star gas storage 130ltr hot water system
- Garage, concrete hardstand and Builder's Infinity specification COLORBOND® auto sectional door with flush fit pelmet and track system and 3 controllers (as per plan)
- Up to 6m long full width paved Driveway, Verandah/Porch, Alfresco and 1m wide path (from Builder's 60mm Infinity specification) (with exception of rear Garage designs which include a 2m long Driveway as standard) (where applicable)
- Painted MDF cornice to Garage with 28c high hardiflex ceiling
- Feature designer Front Entry door
- Solid Duracote door to Garage entry
- Quality Gainsborough door handle entrance set and double deadlock to Front Entry and Garage entry doors
- Quality Gainsborough internal door handles

**Kitchen Inclusion**

- 20mm stone benchtops from Infinity Kitchen specification
- Diamond White Gloss or Ashwood Gloss doors, drawer fronts, fixed panels to island bench and all exposed edges
- Infinity Kitchen specification handles
- Pull-out double bin
- Double sized **blum** cutlery tray
- Wall tiling up to underside of overhead cupboards from Builder's Infinity specification
- Laminated Pantry with four shelves
- Microwave recess with single power point
- Pot drawers

**Colorbond®** | Roof, downpipes and guttering made from genuine COLORBOND® steel.

**Overhead cupboards**

- 2650mm long x 1200mm wide island bench or 2950mm long x 1200mm wide multi-level island bench with waterfall ends (where applicable, as per plan)
- Soft closing doors and drawers
- Infinity specification Kitchen sink - 1½ bowl above mount stainless steel sink with single drainer and basket wastes or handmade undermount double bowl stainless steel sink and basket wastes with Ultimo sink mixer (where applicable, as per plan)
- Dishwasher provision with cold tap and single power point
- Westinghouse 900mm stainless steel freestanding stove to Kitchen (electric oven and gas hotplate) or 2 x Electrolux 600mm ovens and 900mm Electrolux hotplate (where applicable, as per plan)
- Electrolux 800mm stainless steel concealed rangehood to Kitchen

**Scullery Inclusions (where applicable)**

- 20mm stone benchtops from Infinity Scullery specification
- Diamond White Gloss or Ashwood Gloss doors and all exposed edges including overhead cupboards (where applicable, as per plan)
- Infinity Scullery specification handles
- Infinity specification Scullery sink - 32L above mount stainless steel sink and Premo with pull out Kitchen Mixer (where applicable, as per plan)
- Wall tiling up to underside of overhead cupboards from Builder's Infinity specification
- Soft closing doors

**Laundry and Bathrooms**

- 20mm stone benchtops from Infinity specification to Bathroom and Ensuite
- Diamond White Gloss or Ashwood Gloss, Pearlescent White or Textured Hazelwood doors and all exposed edges to Bathroom and Ensuite
- 20mm Cotton White stone benchtop and Pearlescent White doors and all exposed edges to Laundry
- 2m high tiling from Builder's Infinity specification to Bathroom and Ensuite shower recess (where applicable, as per plan)
- Floor tiling from Builder's Infinity specification to Bathroom, Ensuite, WC and Laundry
- Semi frameless clear glazed shower screen and pivot door to Bathroom and Ensuite
- Framed mirrors (full width of the vanity) to Bathroom and Ensuite
- European inspired gooseneck with round or square shower rose to Bathroom and Ensuite
- European inspired above mount china basins to Bathroom and Ensuite
- European inspired dual flush china toilet suite with 4 star rating and soft close seat
- European inspired 45ltr stainless steel trough
- European inspired chrome double towel rails and toilet roll holders
- Automatic washing machine taps
- Flumed exhaust fan to WC areas
- Chrome plated floor wastes
- Linen recess with 4 white lined shelves (where applicable, as per plan)
- 1520mm long bath to Bathroom (where applicable, as per plan)
- Soft closing doors and drawers (drawers where applicable, as per plan)

**Additional Built-In Value**

- 31c high ceilings to Front Entry Passage, Kitchen, Meals and Family
- Fully ducted reverse cycle air conditioning
- Vertical blinds throughout internally (excluding obscure glazed wet areas) from Builder's Infinity specification
- LED lighting throughout internally from Builder's Infinity specification
- Porcelain glazed 450mm x 450mm floor tiles to Entry and Main Living area from Builder's Infinity specification
- Luxurious loop pile carpet and underlay to all Bedrooms including robes and Audio Visual from Builder's Infinity specification (where applicable)
- Mirrored sliders to all minor Bedroom robes (where applicable, as per plan)

Blueprint Homes WA Pty Ltd | 257 Balcatta Road, Balcatta WA 6021  
 PO Box 772, Balcatta WA 6914 P 6241 4888 W [blueprinthomes.com.au](http://blueprinthomes.com.au)

\*This information is accurate at time of printing. All details are to be confirmed during your consultation with your Blueprint representative and your final plans and addenda will represent what you have purchased. Images for illustrative purposes only. Kitchen size based on final plan selected.

11/2018\_BP0468\_BRN1904



“Everything is included at a price you can afford, so relax”



It's better building with Blueprint.

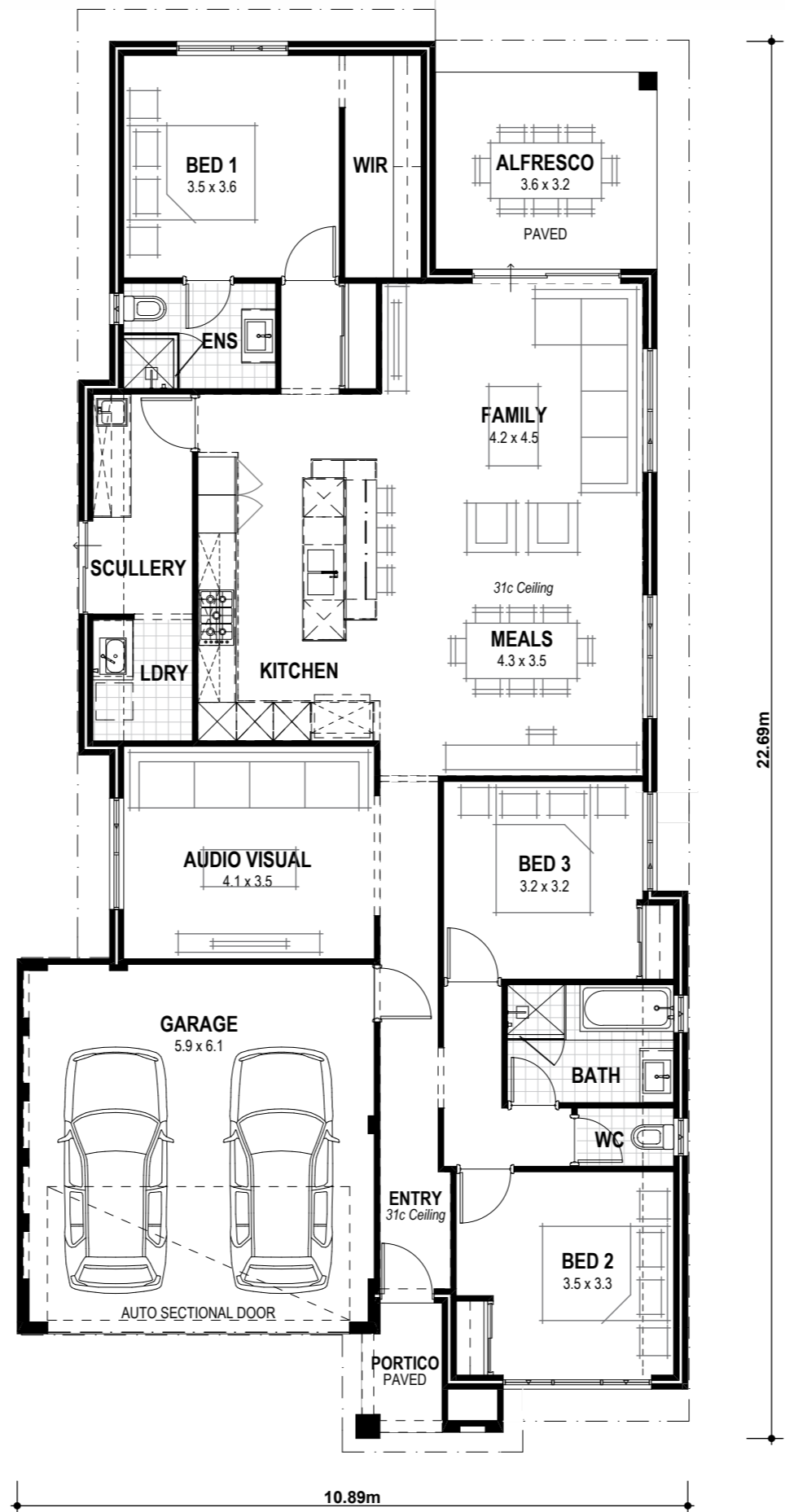
# Big value inclusions.



## Plus European inspired inclusions.



AND OUR FUTURE CONNECT PACK



VITAL STATS | Living area 169m<sup>2</sup> (including Alfresco) | Total area 206m<sup>2</sup> (excluding eaves) | Scale 1:100



Cable Beach Included



Cable Beach Premium