

# UNIQUE BURLEIGH AS DISPLAYED INCLUSIONS

- Acrylic render to Front Elevation, Left Hand Side Elevation and Rear Elevation (including Alfresco pier) (excluding Right Hand Side Elevation and Garage zero lot wall)
- Stone cladding (with negative detailing) from Builders standard external range to 37c high pier to Front Elevation
- Timber look panelling from Builders standard range to recessed section at top of Audio Visual (including return)
- Monier Prime Horizon concrete roof tiles from Builders standard colour range
- 30 degree roof pitch
- 31c high ceiling to Garage
- Feature lining boards from Builders standard range to Alfresco ceiling
- Gyprock lining to all internal walls (excluding Garage and full height wall tiling areas)
- 28c high x 1200mm wide aluminium single lite (clear glass) door and frame with designer line pull handle to Front Entry
- 28c high x 840mm wide aluminium single lite (clear glass) door and frame with designer line lever handle to Laundry
- 28c high aluminium stacker style sliding door to Kitchen/Alfresco and Family/Alfresco
- 28c high head to windows throughout
- 2340mm high internal, Garage/Entry and Rear Garage doors and frames
- Builders upgrade range metal door frames internally and to Rear Garage
- Corinthian Deco range solid door to Garage/Entry
- Corinthian Deco range doors internally
- Two Electrolux 600mm multi-function electric ovens to Kitchen
- Electrolux microwave with trim kit to Scullery
- Four stone colours allowed to benchtops
- Builders upgrade range 20mm thick stone benchtops allowed for to Kitchen (excluding breakfast bar area raised benchtop) and section of Scullery
- Two Builders upgrade range 20mm thick stone waterfall ends allowed for to Kitchen benchtop
- Builders standard range 65mm edge stone allowed for to Kitchen breakfast bar area raised benchtop
- Builders standard range 65mm edge stone waterfall end allowed for to Kitchen breakfast bar area raised benchtop
- Builders range vinyl wrap satin Burleigh profile doors and drawer fronts to Kitchen and section of Scullery
- 25mm square edge laminate benchtop with shelving under and overhead shelving to section of Scullery with wall tiling from Builders Elegance range
- Push catch handles to drop zone overhead cupboard, fridge recess cupboards and cupboards over ovens in Kitchen and cupboard over microwave in Scullery
- 30mm recessed finger groove handles to all remaining cabinetry doors
- Mirrored splashback to Kitchen and section of Scullery from Builders upgrade range
- Two Hettich ArciTech 450mm wide bins to full height Kitchen drawer
- Two corner hinges to Kitchen cupboards
- One corner hinge to Scullery cupboards
- Single bowl undermount stainless steel sink with retractable style mixer to Scullery
- European inspired 1700mm freestanding bath to Ensuite
- Full height wall tiling to Ensuite, Ensuite WC, Bathroom and Powder
- Tiled niche to Ensuite bath and shower areas and Bathroom shower area
- Vanity basin and basin mixer with 20mm thick stone benchtop and cupboards to Powder
- Builders upgrade range 20mm thick stone benchtops allowed for to Ensuite, Bathroom, Laundry and Powder
- Builders range vinyl wrap satin Burleigh profile doors and drawer fronts (where applicable) to Ensuite, Bathroom, Laundry and Powder
- One set of two drawers to Ensuite vanity
- Two sets of two drawers to Bathroom vanity
- Laminated broom cupboard to Laundry
- 1370mm high frameless mirrors with chrome dome fixings to Ensuite, Bathroom and Powder
- 10mm thick frameless clear glazed fixed shower screen panel to Bathroom
- Builders Burleigh range plumbing fixtures and fittings (with undermount trough to Laundry)
- Builders Burleigh range toilet roll holders and towel rails
- Mirrorline mirrored sliders to Bedroom 2 robe, Bedroom 3 robe and Bedroom 4 robe
- Mirrorline Supa White Kote sliders to Laundry Linen and Bedroom Passage Linen
- Clipsal Saturn Zen light switches and power points (excludes face brick areas – to remain as Clipsal 2000 series)
- Built-in shelving system to Bedroom 2 robe, Bedroom 3 robe and Bedroom 4 robe
- Upgrade laminate colour to Master Suite Walk In Robe
- Frameless grey tint mirrors to Ensuite bath area niche, above and below Front Entry Passage cabinetry and below Kitchen raised breakfast bar benchtop (facing Alfresco)
- 65mm square edge laminated benchtop with two banks of three drawers under, laminate panels and overhead cupboards to I.T. Nook (horizontal grain laminate allowed)
- 16mm square edge laminate benchtop with drawers under to Front Entry Passage Passage
- 65mm square edge laminate benchtops to Bedroom 2 and Bedroom 3
- Laminate screening between Front Entry Passage and Audio Visual
- Painted MDF skirting from Builders standard range
- Feature tile cladding from Builders Elegance range to Minor Bedroom Passage wall between Bathroom and Powder
- Lock and viewing panels to both meter boxes

WHICH SPECIFICATION?  DISPLAY  ELEGANCE  ESSENTIALS

## ELEGANCE/ESSENTIALS SPECIFICATIONS

	ELEGANCE	ESSENTIALS
<b>Standard inclusions</b>		
Home Owners Indemnity insurance	•	•
H.I.A. fixed Building Contract	•	•
6 Star compliant home	•	•
4 month maintenance period	•	•
Re-Peg to site (to new subdivisions)	•	•
Contour survey completed on your block	•	•
Building Permit and Water Corporation application fees included	•	•
Termite treatment and certificate	•	•
R4.0 ceiling insulation to home including Garage	•	•
Double clay brick construction	•	•
2 course Blueprint Homes range external face bricks	•	•
Rolled brick joints in cream mortar	•	•
Your choice of full COLORBOND® metal roof range	•	•
COLORBOND® fascia, downpipes and slotted gutters	•	•
25° roof pitch as standard	•	•
H2 treated roof timbers	•	•
Quality Dowell powder-coated aluminium sliding glass doors	•	•
Quality Dowell powder-coated aluminium breeze lock windows	•	•
Flyscreens to all aluminium opening windows and sliding doors	•	•
Metal corner plaster beads to all internal trafficable corners (excludes sliding door, window and front door reveals)	•	•
Quality Gainsborough lever door handles to internal doors	•	•
European inspired mixers throughout	•	•
A.B.S. edges to laminated cupboard doors	•	•
Shelf and rail to minor Bedroom robes	•	•
Walk-in or Built-in Pantry with 4 white lined shelves (as per plan)	•	•
Walk-in or Built-in Linen with 4 white lined shelves (as per plan)	•	•
Painting specification includes: ceilings and cornice, doors and door frames, eaves, woodwork and meterbox	•	•
Dishwasher provision with cold tap and single power point	•	•
Future connect pack including TV, phone and internet point	•	•
Double power points throughout excluding Garage and appliance locations	•	•
3 external, 1 Garage ceiling and ample internal light points	•	•
Hard wired smoke detectors	•	•
2 safety switches	•	•
2 external garden taps	•	•
<b>Feature front elevation (as displayed)</b>	•	
Double Garage with 28c high 10mm plasterboard ceiling and concrete hardstand	•	
Builder's Elegance range custom auto sectional door to Garage as displayed with 3 controllers	•	
Up to 6m long full width paved Driveway, Verandah/Portico/ Porch, Alfresco and 1m wide path (from Builder's 60mm Elegance range) (with exception of rear Garage designs which include a 2m long Driveway as standard)	•	
<b>Painted sand finish rendered to front elevation</b>	•	
Double Garage with 25c high Hardiflex ceiling with MDF scotia and concrete hardstand	•	
Builder's Essentials range COLORBOND® auto sectional door to Garage with flush fit pelmet and track system and 3 controllers	•	
Up to 6m long full width paved Driveway, Verandah/Porch, Alfresco and 1m wide path (from Builder's 60mm Essentials range) (with exception of rear Garage designs which include a 2m long Driveway as standard)	•	
31c high ceilings as displayed	•	
3c recessed 10mm plasterboard ceiling to Alfresco	•	
<b>Feature glass hinged 1200 entry door to front entry</b>	•	
Gainsborough Omni pull handle entry set to front entry door	•	
Gainsborough Trilock door hardware to Garage entry and rear Garage doors	•	
Solid Duracote doors to Garage entry and Rear Garage	•	
<b>Feature glass front entry door to front entry</b>	•	
Quality Gainsborough deadlock and lever entrance set to Front Entry and Garage entry doors	•	
Solid Duracote door to Garage entry	•	
<b>Quality Whitekote or Mirrored sliders to robes</b>	•	
Built-in shelving system to Master Suite walk-in robe (as displayed)	•	
Door and frame to robes in minor Bedrooms	•	

NAME \_\_\_\_\_

SIGNATURE \_\_\_\_\_ DATE / /

	ELEGANCE	ESSENTIALS
Shelf and rail to Master Suite walk-in-robe		•
Shelf and rail to minor Bedroom robes		•
<b>Builders Elegance range cornice throughout internally and to Garage (as displayed)</b>	•	
Clipsal Slimline light switches and power points from Builder's Elegance Range	•	
<b>5 star gas storage 160ltr hot water system</b>		•
<b>5 star gas storage 130ltr hot water system</b>		•
Choice of quality handles from Builder's Elegance range to all cupboards	•	
Choice of quality handles from Builder's Essentials range to all cupboards		•
Soft closing cabinet doors and drawers as standard	•	•
<b>Kitchen</b>		
20mm stone benchtops to Kitchen	•	
Electrolux 900mm black ceramic glass gas hot plate	•	
Electrolux 600mm stainless steel multi-function electric oven/s or Electrolux 900mm stainless steel multi-function electric oven (as displayed)	•	
Elegance range 900mm canopy style rangehood (flumed) or Elegance range 800mm concealed rangehood (flumed) (as displayed)	•	
European inspired double bowl undermount stainless steel sink with mixer	•	
Pot drawers to Kitchen (as displayed)	•	
Overhead cupboards (as displayed)	•	
Square postformed laminated benchtops to Kitchen	•	
Westinghouse 900mm stainless steel gas hot plate with wok burner	•	
Westinghouse 900mm stainless steel multifunction electric oven or Westinghouse 600mm multifunction electric oven	•	
900mm canopy style rangehood (flumed)	•	
1000mm wide splashback tiling between hotplate and rangehood	•	
European inspired 1¼ bowl single drainer stainless steel sink with mixer	•	
<b>Laundry</b>		
European inspired dual flush china toilet suite with 4 star rating and soft close seat	•	•
Automatic washing machine taps	•	•
2m high tiling to Bathroom and Ensuite shower recess	•	•
Floor tiling to Bathroom, Ensuite, WC's and Laundry	•	•
European inspired chrome double towel rails and toilet roll holders	•	•
1525mm long bath (as displayed)	•	•
20mm stone benchtops to Bathroom, Ensuite and Laundry	•	
European inspired gooseneck with round or square rainhead shower or rail shower to Ensuite	•	
European inspired gooseneck with round or square rainhead shower to Bathroom	•	
European inspired 45ltr stainless steel trough and cabinetry to Laundry	•	
Clear glazed semi-frameless shower pivot door to Bathroom and Ensuite	•	
European inspired above counter china basins to Bathroom and Ensuite	•	
Frameless full vanity width mirror to Bathroom and Ensuite	•	
Flumed exhaust fan to Ensuite, Bathroom and WC's	•	
Tile insert floor wastes	•	
Hobless showers to Bathroom and Ensuite	•	
<b>Mitred tiled edges throughout</b>	•	
Square postformed laminated benchtops to Bathroom, Ensuite and Laundry	•	
European inspired gooseneck with round or square rainhead shower to Bathroom and Ensuite	•	
European inspired 45ltr stainless steel trough and 1m cabinetry to Laundry	•	
Clear glazed framed pivot shower screen door to Bathroom and Ensuite	•	
European inspired inset china basins to Bathroom and Ensuite	•	
Framed full vanity width mirror to Bathroom and Ensuite	•	
Flumed exhaust fan to WC areas	•	
Chrome plated floor wastes	•	

## THE BURLEIGH



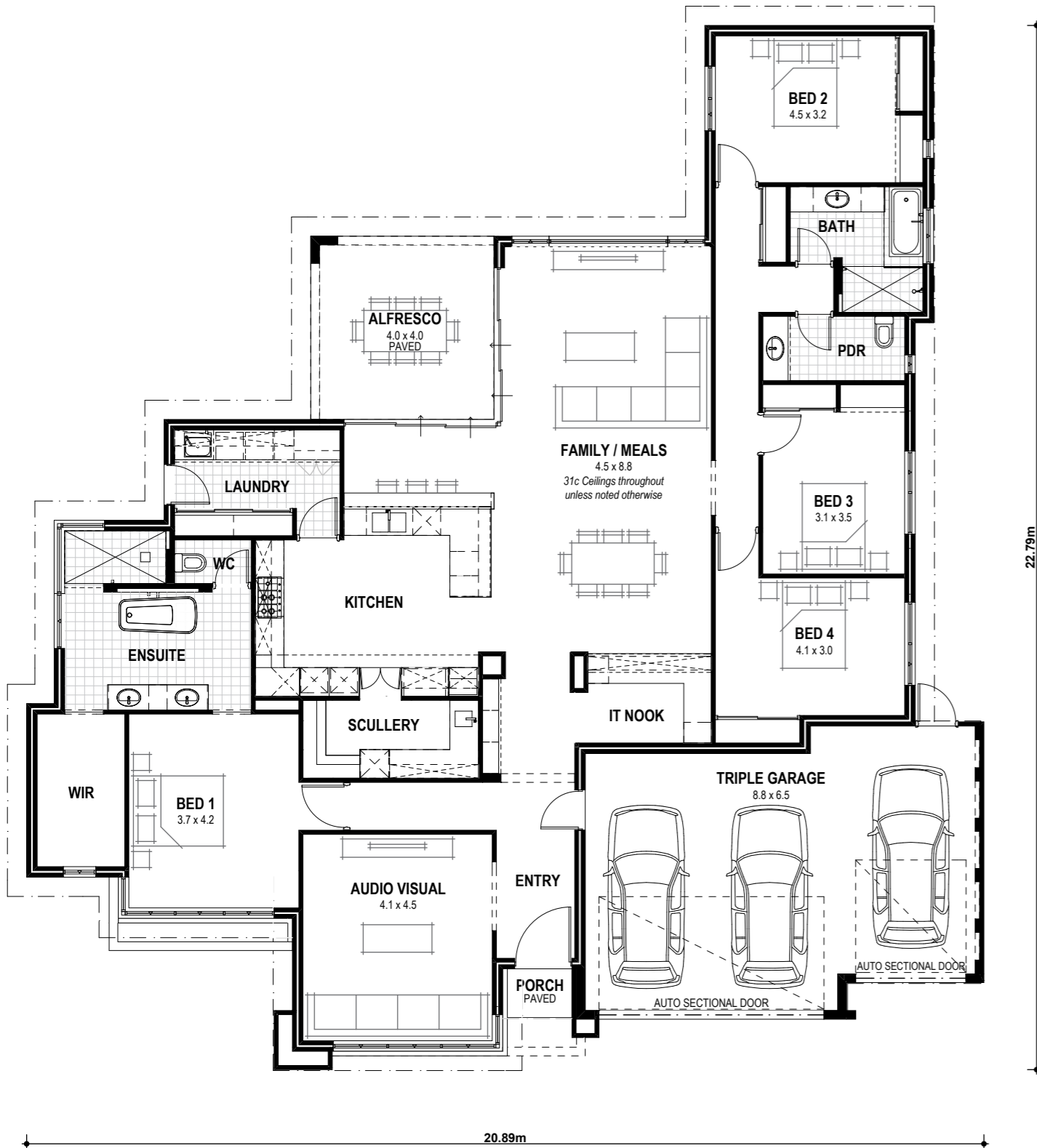
115 Burleigh Drive, Burns Beach (Burns Beach Estate).

9440 1800  
blueprinthomes.com.au



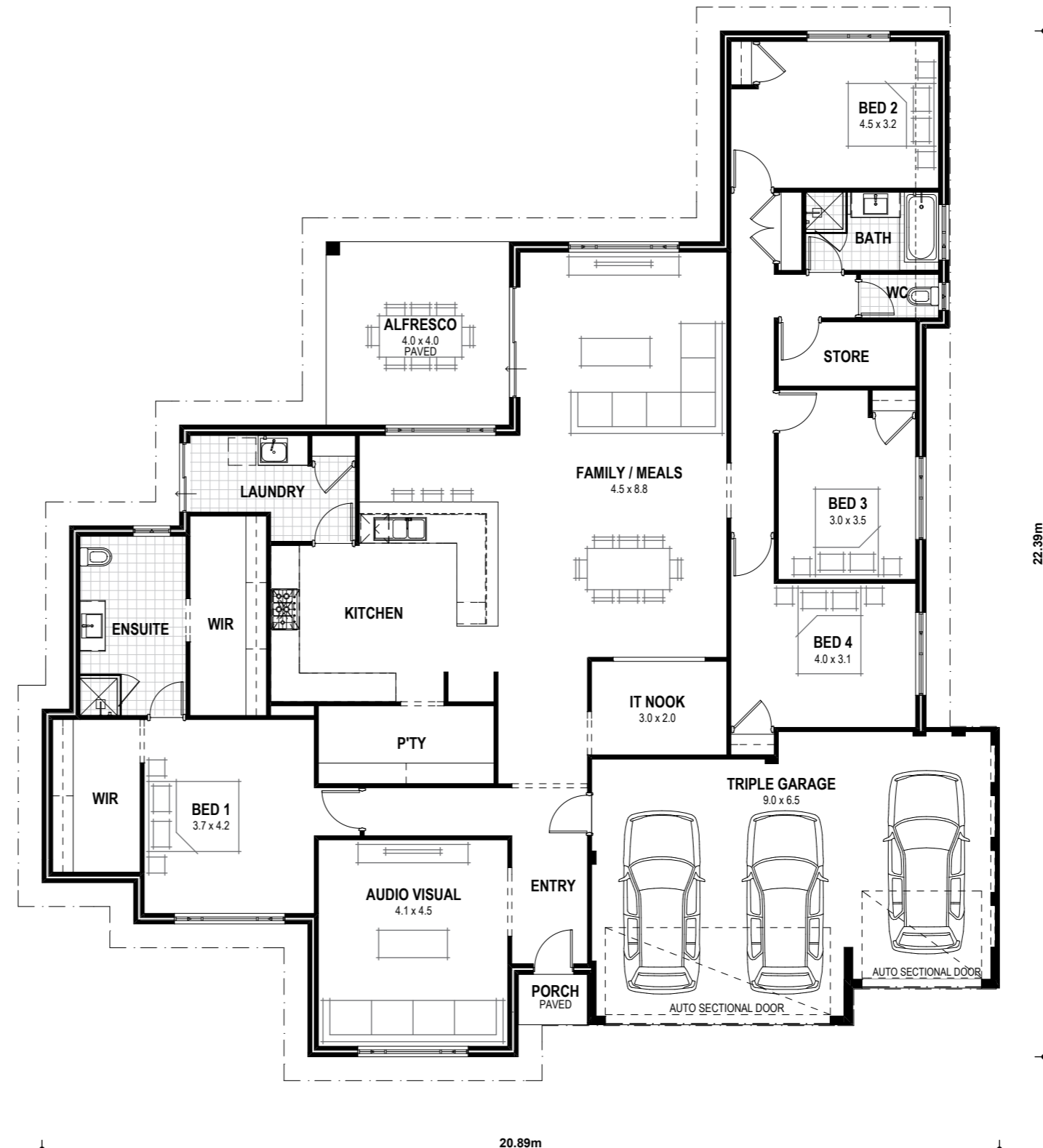
# THE BURLEIGH ELEGANCE

VITAL STATS Living area 265m<sup>2</sup> (including Alfresco) Total area 317m<sup>2</sup> (excluding eaves) Scale 1:120



# THE BURLEIGH ESSENTIALS

VITAL STATS Living area 262m<sup>2</sup> (including Alfresco) Total area 316m<sup>2</sup> (excluding eaves) Scale 1:120



**blueprint**  
HOMES  
Since 2005



Blueprint Homes WA Pty Ltd  
257 Balcatta Road, Balcatta WA 6021  
PO Box 772, Balcatta WA 6914  
P 6241 4888 W [blueprinthomes.com.au](http://blueprinthomes.com.au)

Disclaimer: This information is accurate at time of printing. All details are to be confirmed during your consultation with your Blueprint representative and your final plans and addenda will represent what you have purchased.

02/2018\_BP0484\_BRN1904